

MANOEUVRE GUIDES



PARALLEL PARKING

Manoeuvre Steps

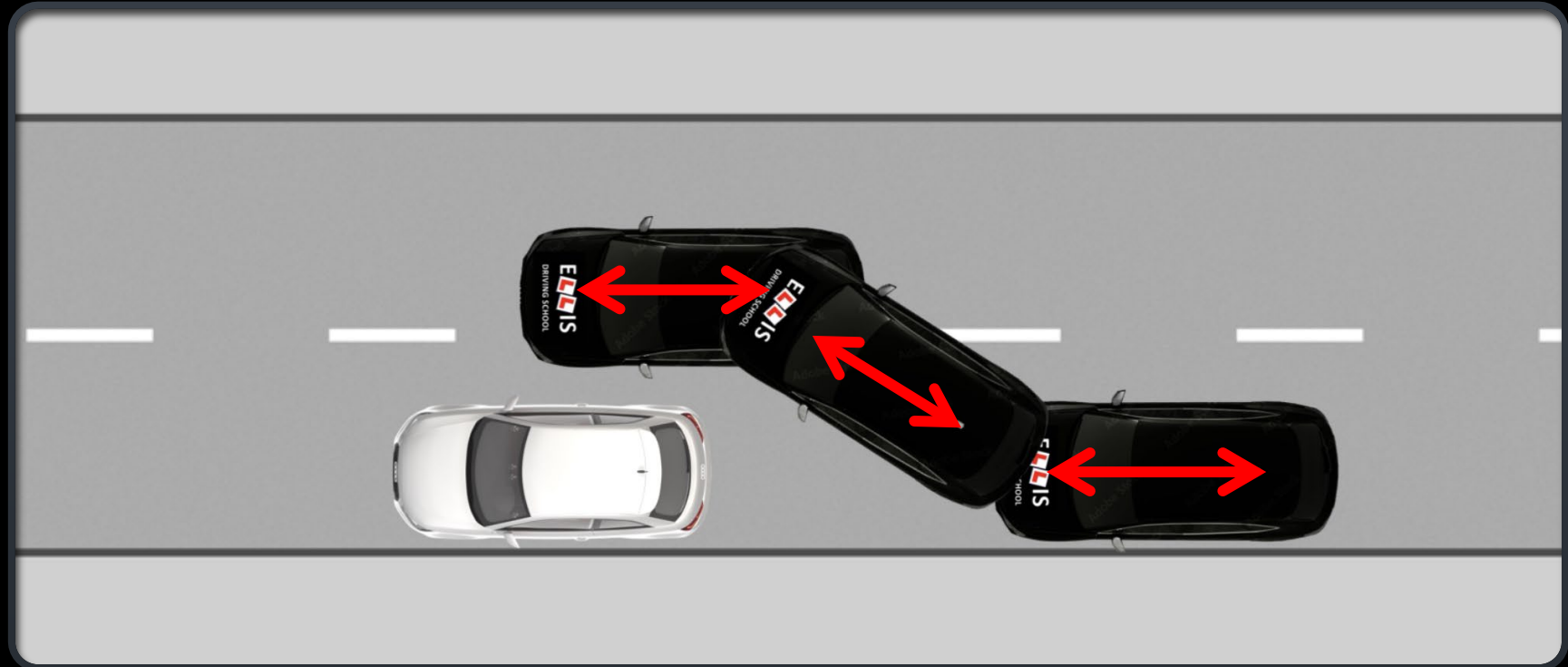
1. Pull up on left hand side one car length behind a car.
2. Pull alongside car, indicate left & put into reverse.
3. Throughout the manoeuvre check blind spot to blind spot.
4. Reverse until head in line with end of car.
5. Turn left and reverse until angled 45 degrees or to 2 o'clock.
6. Straighten steering.
7. Reverse until kerb starts to disappear in main left wing mirror.
8. Turn right starting with one full turn and then adjust towards the kerb.
9. Adjust if required.

Key Points

1. Control
2. Observation
3. Accuracy

Golden Rules

1. You must finish within 2 car lengths.
2. Regular full blind spot to blind spot checks
3. Stop if any other road users moving or pedestrians near.



RIGHT REVERSE

Manoeuvre Steps

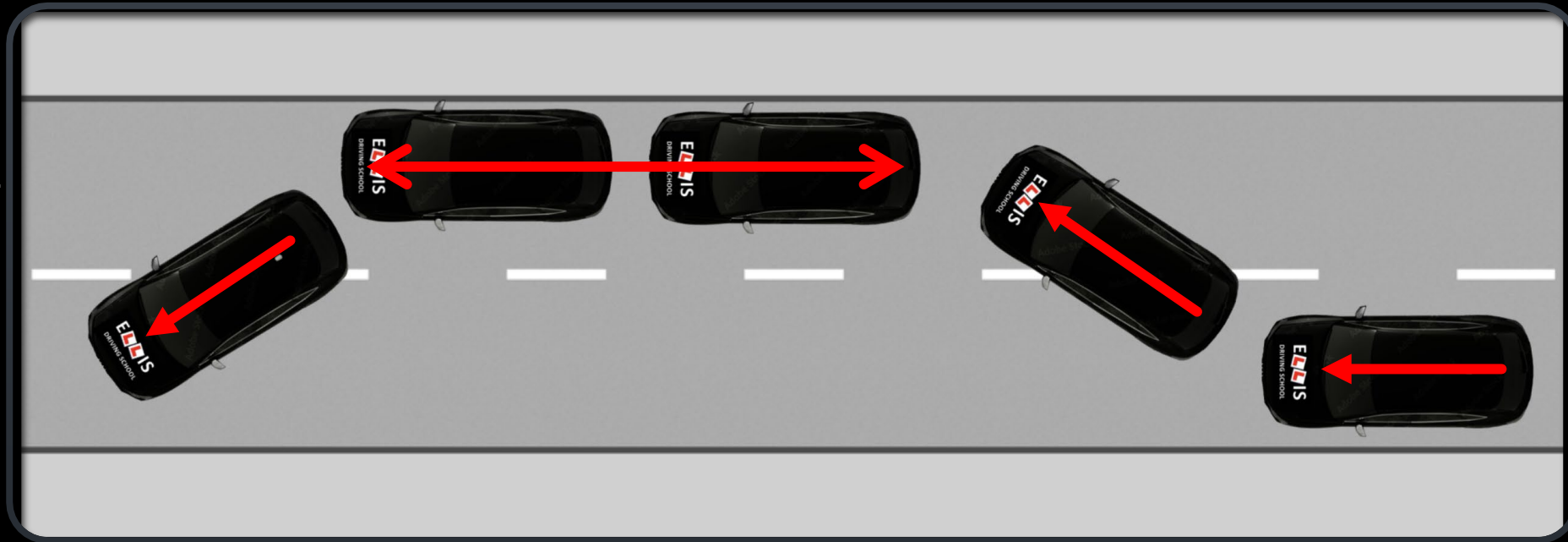
1. Choose safe location avoiding junctions & driveways and any parked cars.
2. Indicate and safely pull up on right hand side of the road.
3. Reverse two car lengths keeping reasonably close to kerb observing blind spot to blind spot carefully throughout.
4. Observe particularly to the left blindspot, Indicate and safely move on using left signal.

Key Points

1. Control
2. Observation
3. Accuracy

Golden Rules

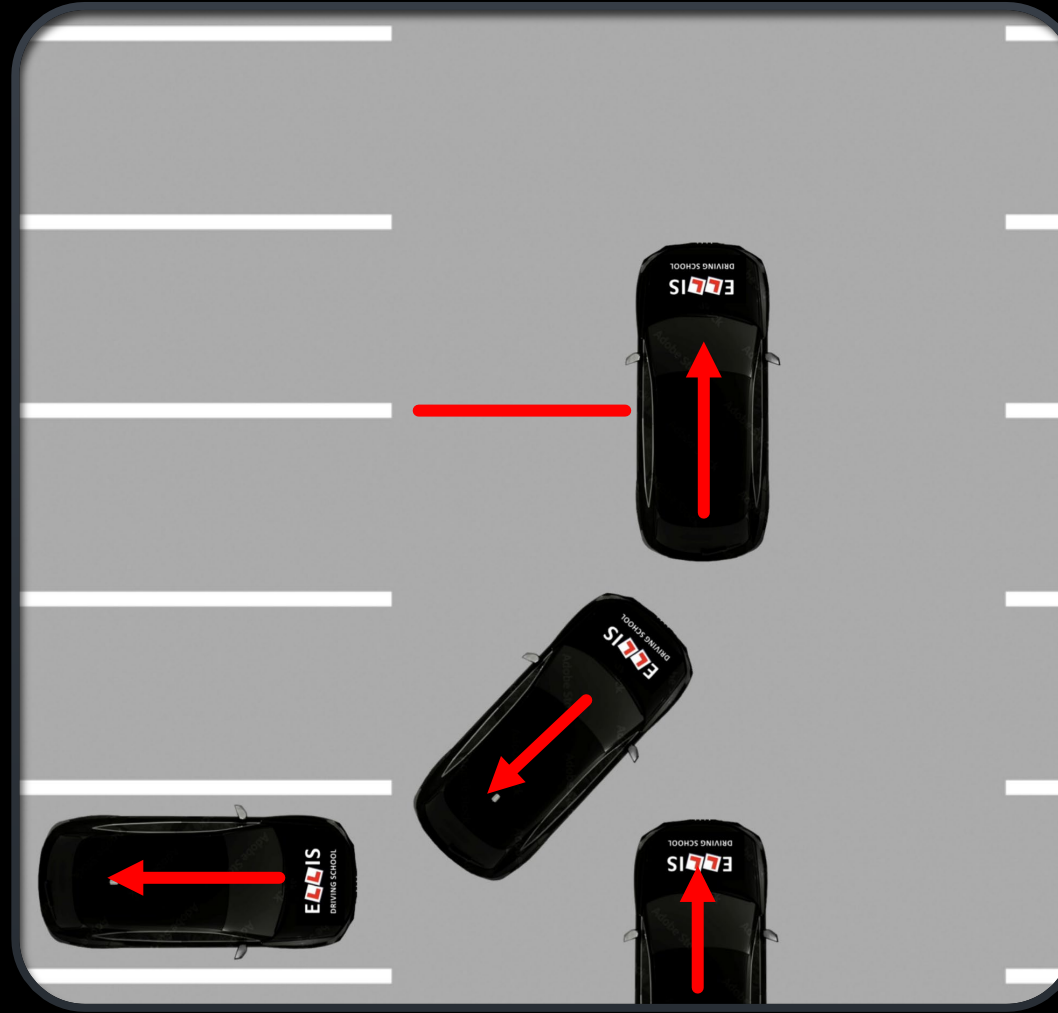
1. You must keep within a drain width of the kerb & not hit kerb.
2. Regular full bind spot to blind spot checks
3. Stop if any other road users moving or pedestrians near.



BAY PARK REVERSE LEFT

Manoeuvre Steps

1. Choose a safe bay on the left hand side.
2. Move forward three white lines from the bay.
3. Position third line in line with elbow.
4. Indicate left.
5. Observe fully right blind spot to left blind spot throughout the manoeuvre.
6. Turn full lock left.
7. Guide in between the lines.
8. Bring back until you are in the centre of the bay.
9. Adjust if required.



Golden Rules

1. You must finish between the white lines.
2. Regular full blind spot to blind spot checks
3. Stop if any other road users moving or pedestrians near.

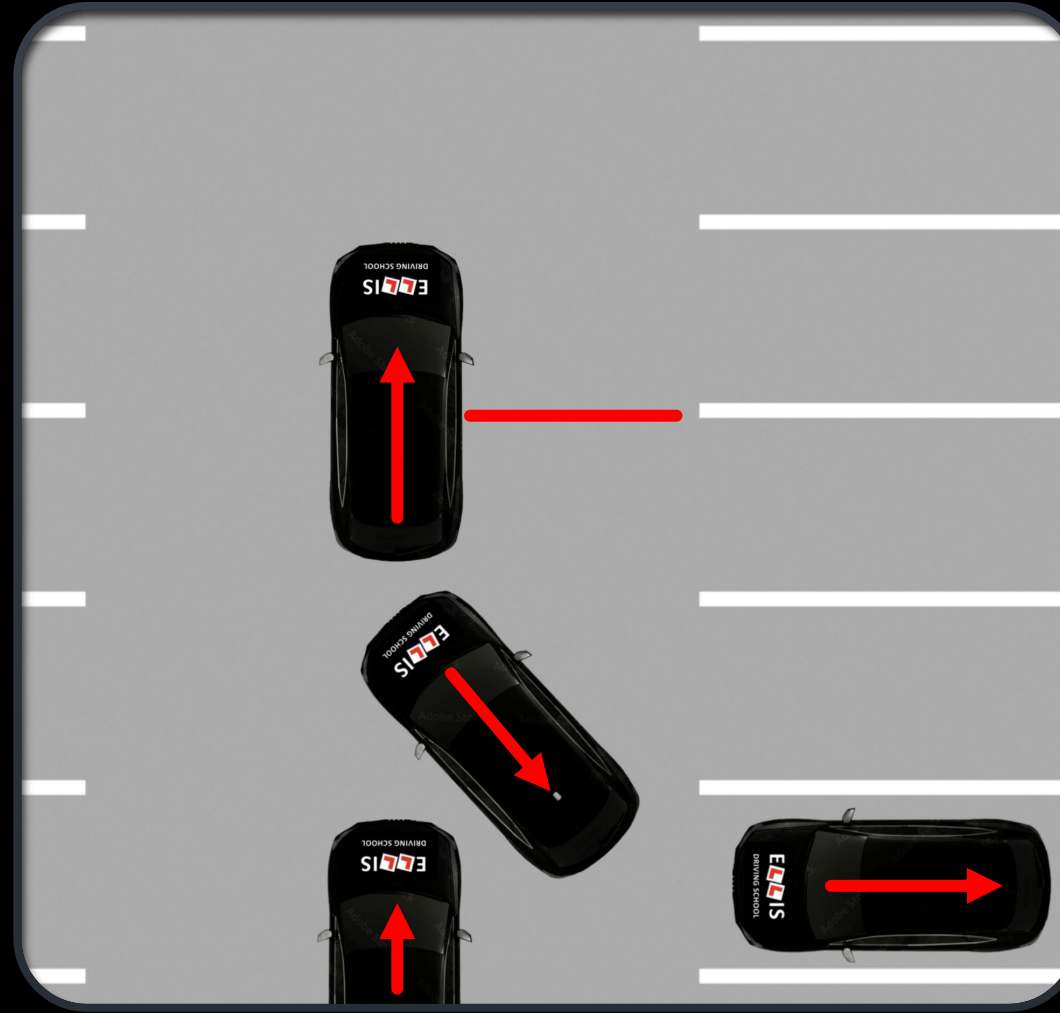
Key Points

1. Control
2. Observation
3. Accuracy

BAY PARK REVERSE RIGHT

Manoeuvre Steps

1. Choose a safe bay on the right hand side.
2. Move forward three white lines from the bay.
3. Position third line in line with elbow.
4. Indicate right.
5. Observe fully left blind spot to right blind spot throughout the manoeuvre.
6. Turn full lock right.
7. Guide in between the lines.
8. Bring back until you are in the centre of the bay.
9. Adjust if required.



Golden Rules

1. You must finish between the white lines.
2. Regular full blind spot to blind spot checks
3. Stop if any other road users moving or pedestrians near.

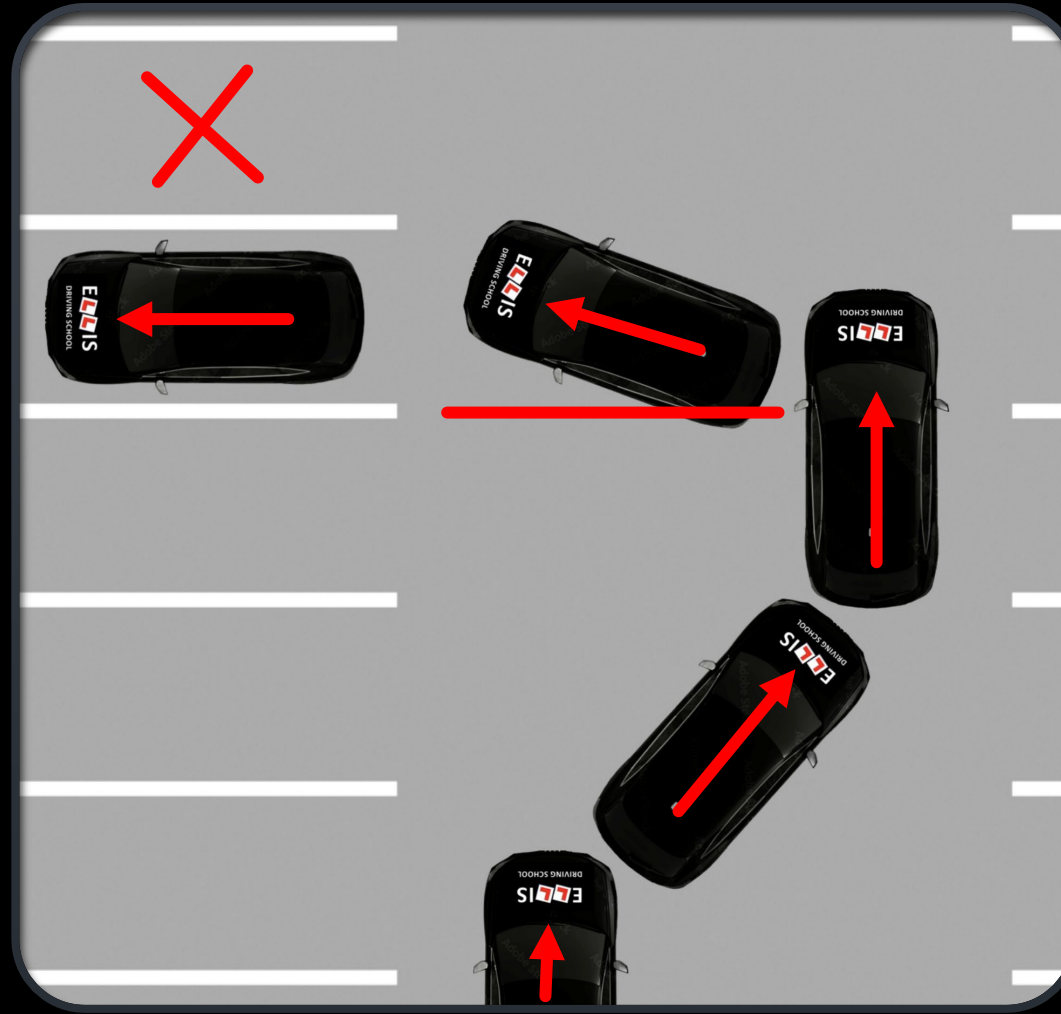
Key Points

1. Control
2. Observation
3. Accuracy

BAY PARK FORWARD LEFT

Manoeuvre Steps

1. Pick a bay on the left hand side. (Be careful your nose sticks out on the right)
2. Move to right hand side of lane whilst indicating left.
3. Line wing mirror with white line.
4. Observe right blind spot to left blind spot.
5. Full lock left.
6. When straight in bay remove steering.
7. Check in mirrors you are in-between the lines.
8. Adjust if required.



Golden Rules

1. You must finish in-between white lines.
2. Regular full blind spot to blind spot checks
3. Stop if any other road users moving or pedestrians near.
4. Be careful of nose sticking out.

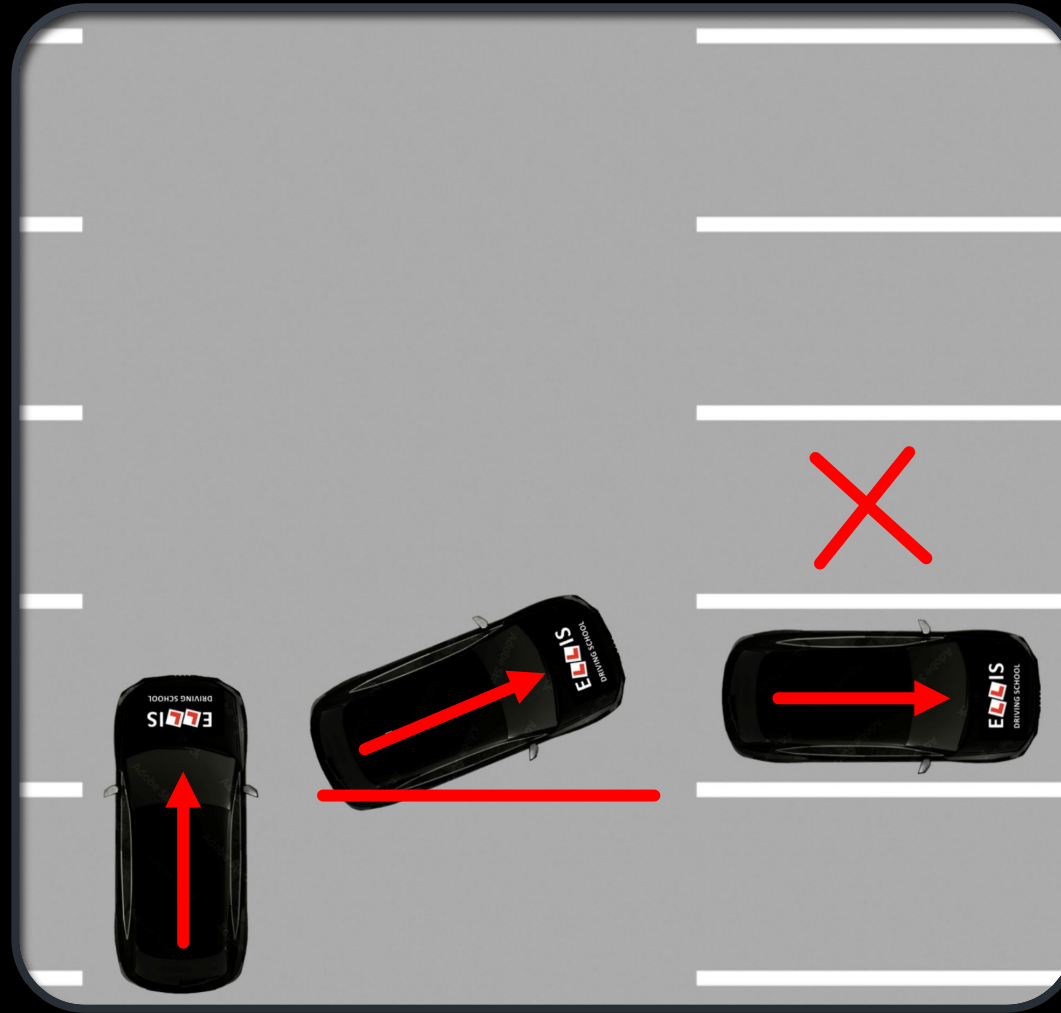
Key Points

1. Control
2. Observation
3. Accuracy

BAY PARK FORWARD RIGHT

Manoeuvre Steps

1. Pick a bay on the right hand side. (Be careful your nose sticks out on the left)
2. Move to left hand side of lane whilst indicating right.
3. Line wing mirror with white line.
4. Observe left blind spot to right blind spot.
5. Full lock right.
6. When straight in bay remove steering.
7. Check in mirrors you are in-between the lines.
8. Adjust if required.



Golden Rules

1. You must finish in-between white lines.
2. Regular full blind spot to blind spot checks
3. Stop if any other road users moving or pedestrians near.
4. Be careful of nose sticking out.

Key Points

1. Control
2. Observation
3. Accuracy